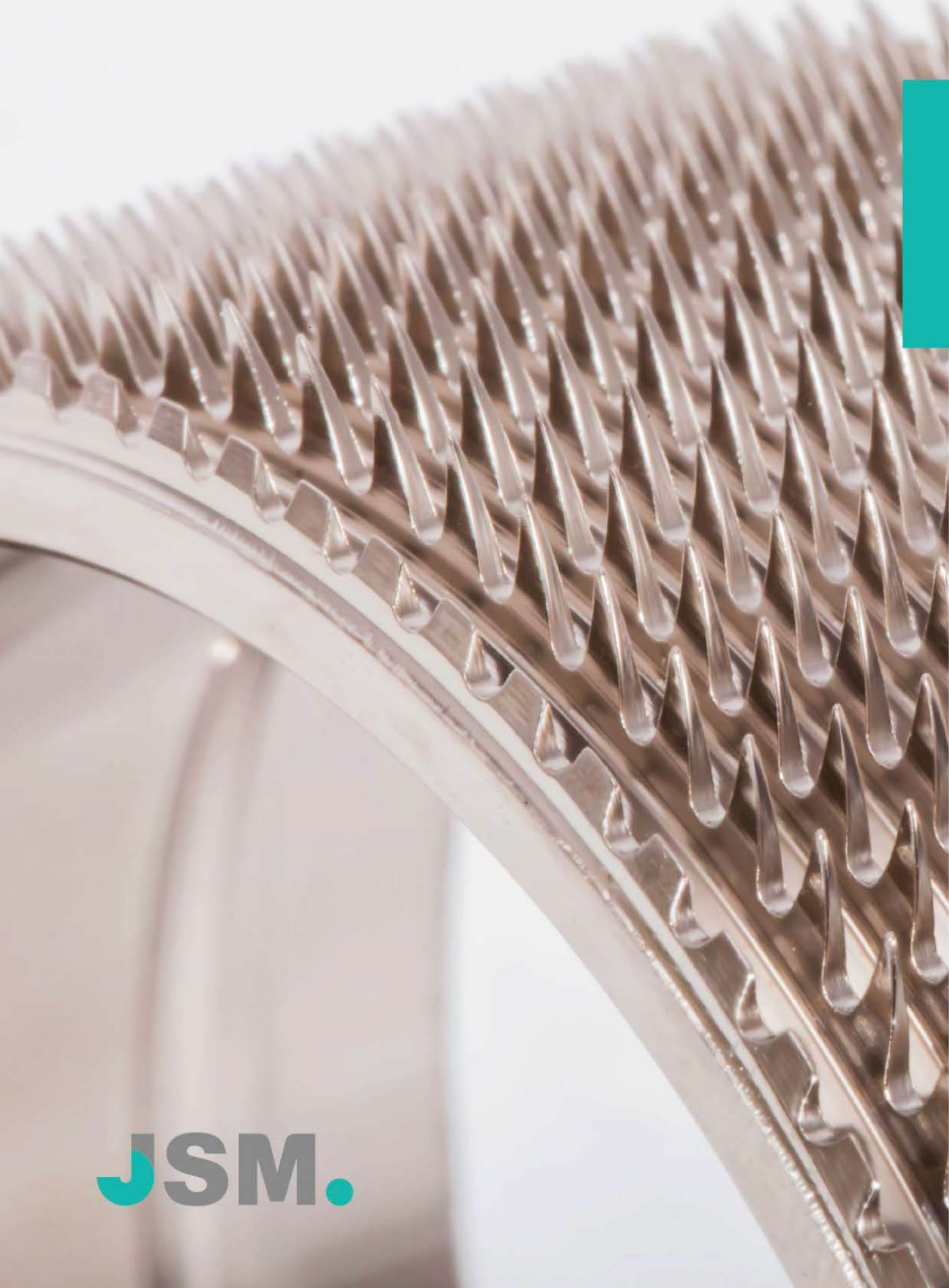


JSM.

JINQIAO SPINNING MACHINERY

Patented
Product With
High Quality





JSM.

CONTENTS

01 ENTERPRISE ARTICLE

Company profile	01
Enterprise evolution	03
The production environment	05

02 JINQIAO PRODUCTS

Product advantage	07
● Technology Components For Automatic Open End Spinning Machinery	
Schlafhorst autocoro	10
Rieter R1, R20, R40, R60	15
Twin disc	19
● Technology Components For Semi-Automatic Open End Spinning Machinery	
Schlafhorst BD series	21
Rieter Semi-Automatic	25
Taitan/Rifa Semi-Automatic	29
Rotor bearing	31

COMPANY PROFILE

Jinqiao is a professional manufacturer of high speed OE spinning technology components since 1996. We have always been committed to R&D, production and sale in this field for two decades. Now we have a staff of 120 people, and 30% of them are experts and technicians in textile field.

By 20 years of joint efforts of the staff and continuous development, Jinqiao has mastered several core technologies and know-how for OE technology components production, such as diamond coating technology, solid ring for full-automatic OE spinning machines production technology and super high speed bearing production technology, etc.; the annual output has reached 1,100,000pcs; we are official supplier of Chinese leading manufacturers of OE spinning machinery; we have been supplying our products to most of Chinese large and medium textile enterprises; our products are also exported to more than 20 countries and/or areas.

Jinqiao locates in Baoding city, Hebei Province; the production base of Jinqiao locates in Qingyuan Economic Development Zone, Baoding City; covers 15000 square meters. The capital asset is 1.2 billion; 140km to Beijing airport, Tianjin seaport and Shijiazhuang airport, the transportation is very convenient and we have obvious location advantages.



CORPORATE PHILOSOPHY & CULTURE

Quality lies on specialization

Jinqiao has been focused on the research & development of open end spinning machinery spare parts instead of any other industries, and tried its best to do it better and better; equipped with the most professional production line to get more accurate production, more stable quality and more efficient management; trained the outstanding staff with different special skills to finish the perfect products by their smart brains and diligent hands.

Respecting nature, connecting people

Jinqiao has its own target, clients have their requirements, and every employee has their own dreams; Jinqiao's core philosophy is to achieve harmonious unity for the development of Jinqiao and the pursuit of material and spiritual from clients and employees for cooperation, share and win-win.

Development is from Science and Technology

Any development of Jinqiao and each improved product of Jinqiao are covered by the power of science and technology. It is eternal for humanity to pursue the perfection, and advanced research and innovation is our working theme. Informatization, intelligentization will open the new times for customization of industrial products. Jinqiao will try its best to be more close to the market and supply you the more suitable products with our wisdom and technology.

Our promise and pursuit:

Advocating quality, seeking excellence

Holding technology, enlightening future

Jinqiao would like to be a respected company in textile machinery industry.



ENTERPRISE EVOLUTION

1996

Jinqiao company was set up, it was engaged in OE spare parts trading and OE spinning technology consulting service.

1998

Started to produce rotor cups for OE spinning; researched and developed the elox equipment for rotor cup by our own team; the wear resistant ability of rotor cups with elox surface treatment reached the world advanced level.

2001

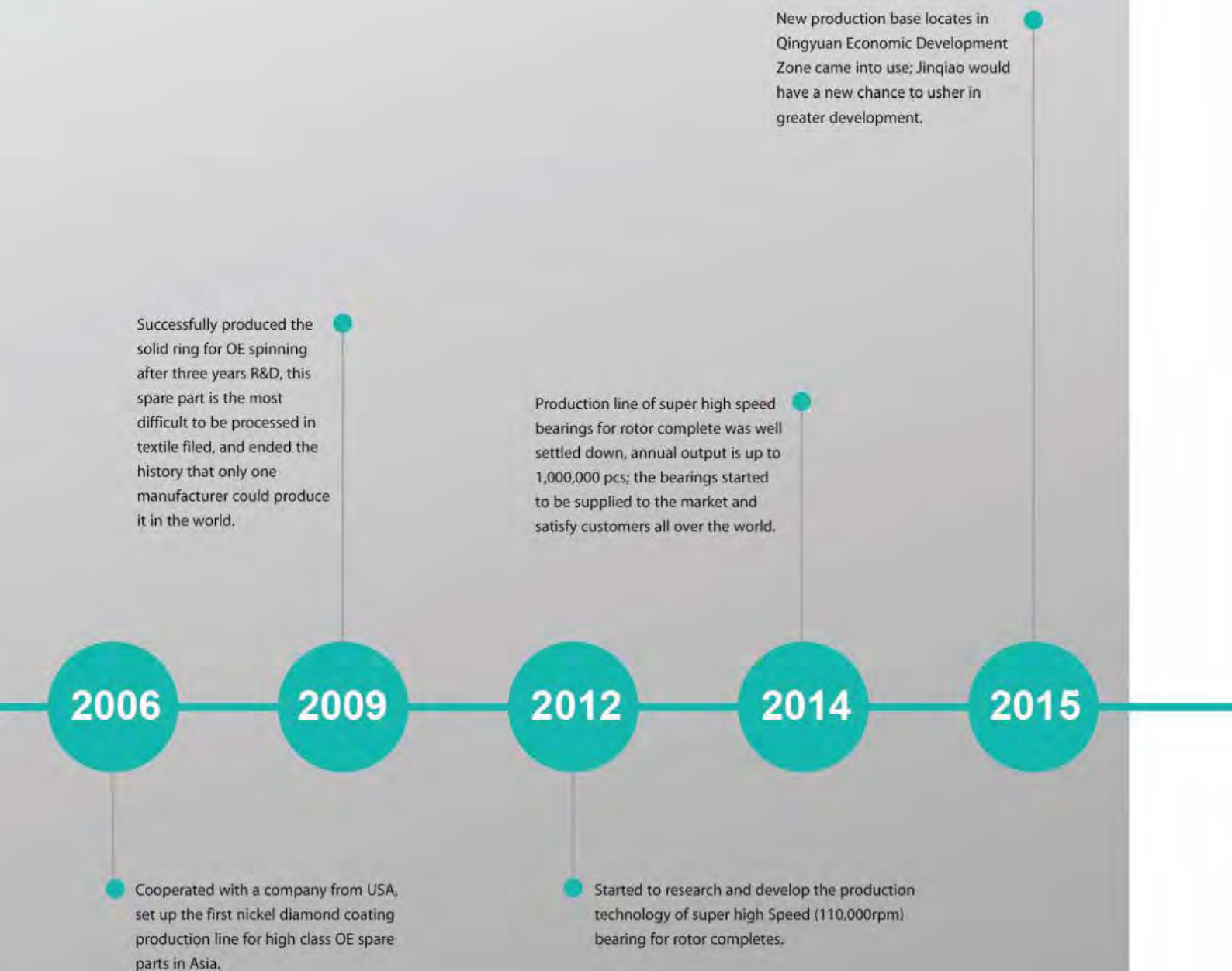
The first set of ECM for oblique holes cross surface processing of rotor cups was produced by us; this technology was in the same level of the world's advanced technology at that time.

2003

Annual output reached 500,000pcs and occupied the main market of China, also exported products in bulk to south-east Asia.

2005

Got elementary success on diamond coating on rotor cups and awarded the patent (ZL 2006 20012220.7) from the Intellectual Property Office of P. R. China; ended the history that Chinese people were not able to produce rotor cups for high speed working.



THE PRODUCTION ENVIRONMENT

ADVANCED
MACHINERY

PRECISION TESTING





PRECISION OPERATIONS



CORNERS OF
WORKSHOP



PRODUCT ADVANTAGE

1

Advanced manufacturing technology from JINQIAO ensures our products to be in the same quality level with original components and spare parts.

2

Special coating on technology components and spare parts from JINQIAO and its American partner, who is the founder of diamond coating, is protected by Chinese patent law.

3

All products from JINQIAO are produced in-house with higher price/performance ratio.

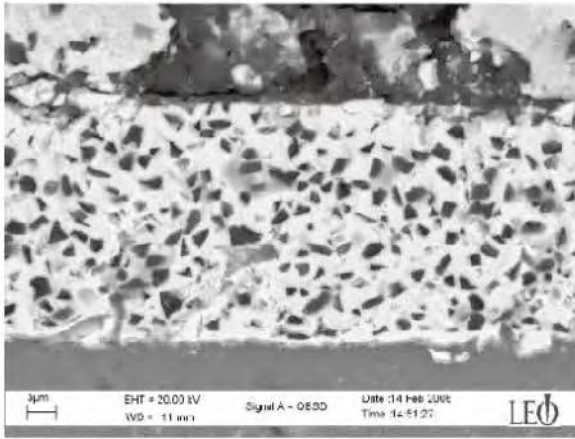
4

JINQIAO could provide quick delivery time for decent orders.

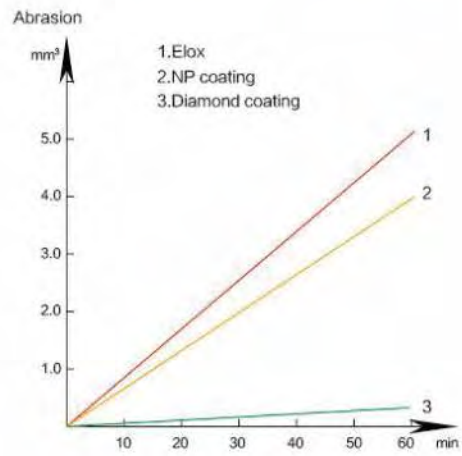
5

JINQIAO absolutely has the ability to make new groove type of rotor and high speed/long life of bearing according to customer-made, so that it would bring you much more benefit.

Compound diamond coating, with high wear resistance, corrosion resistance and good thermal conductivity, could make rotors and opening rollers to be with much more adaptability and much longer working life.



Metallographic Structure (by Chinese Academy of Sciences)



Abrasion loss report of different coatings (by Chinese Academy of Sciences)





TECHNOLOGY COMPONENTS FOR AUTOMATIC OPEN END SPINNING MACHINERY

Schlafhorst autocoro /
Rieter R1, R20, R40, R60 /
Twin disc /

SCHLAFHORST AUTOCORO

ROTOR

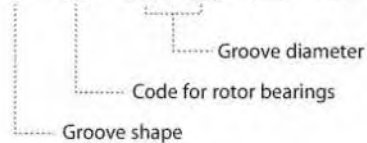
JINQIAO rotor is your best choice for the replacement.

- High precision equipments ensure products stability.
- We can develop new groove type of rotor according to special yarn customers will spin.
- Diamond coating depends on different yarns. Our solutions can decrease your loss.
- Expected life is 25,000 hours. The exact working life depends on different yarns.



Type No.instruction

T333BD



BD-Boride-diamond coating
B-Special coating

Rotor type	Original Part No.	JINQIAO Part No.	Application
G 528 BD		823104004	
G 530 BD	117-038 615	823104005	
K 531 BD	117-037 602		
G 531 BD	117-038 617	823104006	
T 533 BD	117-037 269	823104001	
TB 533 B	139-009 363		
G 533 BD	117-038 619		
GT 533 BD	139-007 806		
T 534 BD	117-037 113	823104002	
TB 534 B	139-008 653		
G 536 BD	117-038 621		
G 536 B	117-038 669		
S 536 BD		8231040071	
TT 536 BD	139-008 197		
TT 536 B	139-010 353		
T 536 BD	117-037 111	823104010	
TB 53 B	139-010 321		
V 536 BD	117-038 265		
G 540 BD	117-038 623		
GT 540 BD	139-007 395		
S 540 BD	117-037 605	823104007	
TB 540 BD		823104008	
TT 540 BD	139-008 185	823104014	
T 540 BD	117-037 254	823104003	
T 540 B	117-037 810		
TB 540 B	139-009 514		
U 540 BD	117-037 590	823104012	
G 546 B	117-038 625		
G 546 BD	117-038 853		
GT 546 BD	139-007 636		
S 546 BD	117-037 791	823104016	
TT 546 BD	139-008 189		
T 546 BD	117-037 788	8231040031	
T 546 B	117-037 814		
TB 546 B	139-009 546		
U 546 B	117-037 818		
U 546 BD	117-037 789		
V 546 BD	117-037 793		
S 556 BD	117-037 795		
TT 556 BD	139-008 318		

Schlafhorst Autocoro SE11 / SE12

Rotor type	Original Part No.	JINQIAO Part No.	Application
G 330 BD	117-038 601		Schlafhorst Autocoro SE9 / SE10
K 330 BD	117-036 916		
G 331 BD	117-038 959	82310301601	
T 331 BD	117-036 972	823103001	
G 333 BD	117-038 605	823103015	
GT 333 BD	139-007 805		
S 333 BD	117-038 801		
T 333 BD	117-036 678	823103006	
G 336 BD	117-038 607	823103016	
S 336 BD	117-038 803		
TT 336 BD	139-008 195		
T 336 BD	117-036 888	823103002	
U 336 BD		823103012	
V 336 BD	117-038 248		
G 340 BD	117-038 609		
GT 340 BD	139-007 379		
S 340 BD	117-037 032		
TT 340 BD	139-008 183	823103008	
T 340 BD	117-036 917	823103003	
U 340 BD	117-037 035		
G 346 BD	117-038 851		
S 346 BD	117-036 903	823103019	
TT 346 BD	139-008 191		
T 346 BD	117-037 028	823103014	
U 346 BD	117-037 041	823103018	
V 346 BD	117-036 915		
S 356 BD	117-037 245		
TT 356 BD	139-007 735		
T 228 BD		823102001	
T 231 BD		823102002	
T 233 BD		8231020021	
T 236 BD		823102003	
G 233 BD		823102004	
T 240 BD		823102005	
U 240 BD		823102006	
T 133 BD	117-037 077	823101005	
T 136 BD	117-037 081	823101102	
U 136 BD		823101004	
G 140 BD	117-038 631	823101104	
T 140 BD	117-037 049	823101003	
S 156 BD	117-037 133	823101106	

Schlafhorst Autocoro SE9 / SE10

Schlafhorst Autocoro SE7 / SE8

SCHLAFHORST AUTOCORO

CLOTHING RING



- The teeth are made from the ring body. It is quite different from wire-mounted ring, so we also call it solid ring. On the clothing ring, there are not any grooves and burrs, which would lead to fibre wrapping, comparing with wire-mounted ring. During working period, fibre transfer will be smoother, so that you can get better quality yarn.
- The surface of clothing ring with diamond coating will be mellower, and will decrease the fibre damage and fibre transfer resistance.
- Because of high wear resistance, working life of clothing ring with diamond coating is 3-5 times longer than other carding wire. Customers obviously avoid changing carding wire frequently.
- High precision processing ensures the sharpness of teeth, concentricity, so it can produce high quality yarn.



Application



Clothing ring application



Teeth type and its application



B174



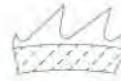
B174-2



B20



B187



S21



S43

Applications	B174	B174-2	B20	B187	S21	S43
100% carded cotton	●	●	●	⊗	○	⊗
100% combed cotton	○	○	●	●	⊗	⊗
Blends:C/P P/V A/V V/C	⊗	⊗	⊗	⊗	●	●
100% polyester	⊗	⊗	⊗	⊗	●	●
100% viscose	○	○	○	●	●	⊗
100% acrylic	⊗	⊗	⊗	⊗	●	⊗
Flax blends	●	●	●	⊗	⊗	⊗

● wonderful ● good ○ ok ⊗ not suggested

Type	Original Part No.	JINQIAO Part No.	Application
S 21 N	117-037 291	814702	Schlafhorst AUTOCORO
S 21 DN	117-037 293	8142101	
B 174 N	117-037 296	814701	
B 174 DN	117-037 295	8142103	
B 20 DN	117-037 297	81421061	
B300DN		8142107	
S43DN		8142108	

RIETER R1, R20, R40, R60

ROTOR

Excellent raw material, strict processing, high quality CNC machine, lead to high quality products, which is in the same quality level with original parts.



Type	Original Part No.	Rieter Part No.	JINQIAO Part No.	Application
28 S D	14.400	191		Rieter R20
30 S BD	14.410	39/139		
30 S D	14.411	38/138		
30 N D				
31 M D			823201001	
32 S BD	14.430	135		
32 S D	14.431	35	823201007	
32 S D	14.432	36/136		
32 DIII BD				
32 N D	14.433	64/164		
35 S BD	14.440	34/134	823201002	
35 S D	14.441	146		
35 DIII BD			823201004	
35 N D	14.442	75/175		
40 S D	14.450	30/130		
40 S BD	14.451	186	823201003	
40 S D	14.452	189		
40 S II				
40 S II ND			823201006	
40 N D	14.453	55/155	823201008	
40 DII D	14.454	80/180		
40 DIII BD			823201005	
48 S D	14.460	31/131		
5 48 BD			823201010	
48 DIII D	14.461	78/178		
48 R D	14.462	5		
56 R D	14.470	33/133		
56 R D	14.471	10		
31-XG-BD-AE			823202010	Rieter R40
31-XT-BD-AE			823202007	
33-XT-BD-AE			823202008	
40-XTC-BD-AE			823202006	
40-DIII-BD			823202004	Rieter R40
30-XG-BD-EC			823202002	
33-XG-BD-EC			823202003	
33-XT-BD-EC			823202005	
40-XTC-BD-EC			8232020061	
31-XG-BD-EC			823202009	
31-XT-BD-EC			8232020071	
33-XT-BD-AE1			82320501	Rieter R60
28-XGM-BD-AE1			82320502	

RIETER R1, R20, R40, R60

OPENING ROLLER



Clothing ring >>

Type	JINQIAO Part No.	Application
B174DN-64	81421111	Rieter R40
OS21DN-64	8142111	
OS21DN	8143501	Rieter R20



Opening roller head >>

Type	JINQIAO Part No.	Application
OK61G	8240301	Rieter R1, R20
OB20G	8240302	
OS21G	82403021	
OS21DN	8240303	
OB20G(YZ)	8240304	
OB20DN(YZ)	8240305	
OB20G(YZ) with cover	8240306	
Trutzschler B174DN(YZ)	82408001	
Trutzschler OB20DN	82408002	
Trutzschler OK40	82408003	



Opening roller complete >>

Type	JINQIAO Part No.	Application
OB20G+bearing	8254001	Rieter R1, R20
OK61G+bearing	8254002	
OS21G+bearing	82540021	
Trutzschler OB20DN+bearing	82540025	
OB20G+bearing (YZ)	8254003	
OS21G+bearing (YZ)	82540031	
Trutzschler B174DN+bearing (YZ)	8254004	
Trutzschler OS21DN+bearing (YZ)	8254005	
OB20DN+bearing (YZ)	8254007	

TWIN DISC

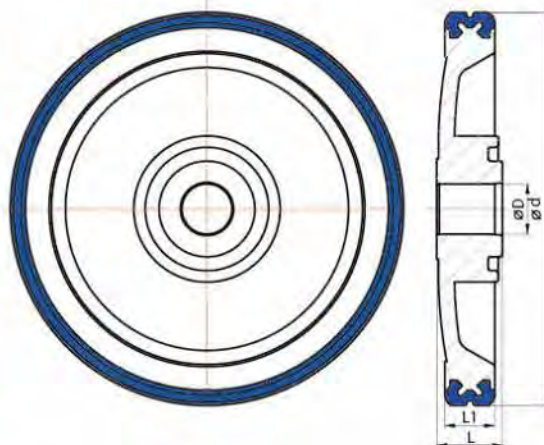
Product Advantage

- Twin disc body is forged from excellent aluminum material, with no deformation and high strength.
- PU is developed with special formula through many years, high wear resistance, fatigue endurance, high temperature heat-resistance.
- High precision processing, Ellipticity $\leq 0.005\text{mm}$
- There is groove design between body and PU. It can make fixed and can not be separated even if 150,000 rpm rotor speed.
- **The above advantages make twin disc have at least 3 years working life.**

Product display >>



Structure diagram >>



Type	ϕd (mm)	ϕD (mm)	L (mm)	L1 (mm)	Part No.			
SE8	69.8	10	12	10	117-630 287 (N)	117-630 293 (R)	117-630 298 (L)	--
SE9	78	10	12	10	139-007 109 (N)	139-007 115 (R)	139-007 120 (L)	--
SE12	78	10	13	10	139-007 109 (N)	139-007 115 (R)	139-007 120 (L)	--
R1 / R20 / RU04 / RU11	69.8	11	12	10	N	--	--	--
R40 / R60	78	10	12	10	N	--	--	M

TECHNOLOGY COMPONENTS FOR SEMI-AUTOMATIC OPEN END SPINNING MACHINERY

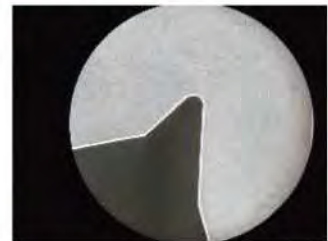
Schlafhorst BD series /
Rieter Semi-Automatic /
Taitan/Rifa Semi-Automatic /
Rotor bearing /

SCHLAFHORST BD SERIES

ROTOR



Situation after used for 8,500 hours



Type	JINQIAO Part No.	Bearing	Application
T33-BD	8222406	T013	Schlafhorst BD320,BD330, BD350,BD380,BD448,BD416
T33-DN	8222407	72-8-7	
T34-ND	8222102	T010A	
T34-BD	8222103	T010A	
T40-ND	8222101	73-1-31A	
T43-BD	8222202	73-1-31B	
T43-DN	8222404	73-1-31T	
V43-ND	8222401	73-1-31	
L54-ND	8222204	73-1-31B	
U54-BD	8222201	73-1-31B	
V54-ND	8222402	73-1-31G	

SCHLAFHORST BD SERIES

OPENING ROLLER COMPLETE



Teeth Type	Bearing	JINQIAO Part No.	Application
OK40G	76-3-KK	82052501	Schlafhorst BD320,BD330,BD350, BD380,BD448,BD416
OK61G	76-3-KK	820525012	
OK36G	76-3-KK	820525013	
OS21	76-3-KK	82052502	
OK40DN	76-3-KK	820525041	
OK61DN	76-3-KK	82052505	
OS21DN	76-3-KK	820525051	
B174DN	76-3-KK	82052506	
OK40	76-3-KK	82052507	
OS21	76-3-7K	82052102	
OK40G	76-3-7K	82052103	
OS21DN	76-3-7K	82052104	
OK40DN	76-3-7K	82052105	
OK61DN	76-3-7K	82052106	
OK37DN	76-3-7K	82052107	
OK36DN	76-3-7K	82052108	
OK61	76-3-7K	82052109	
OS21	76-3-7K	82052110	

OTHER COMPONENTS

No. in photo	Item	Original Part No.	Remark
1	Navel	54304002	R4005 steel smooth R4
		54304006	R7005 steel smooth R7
		54304071	R0006 steel smooth R10
		54304101	BR6K05 ceramic smooth R6
		54304105	BR6K85 ceramic 8 notches R6
		54304111	BR4K55 ceramic spiral R4
		54304113	BR6K55 ceramic spiral R6
		54304115	BR3K65 ceramic 6 notches R3
		54304120	BR6K85V ceramic inside 8 notches, outside 24 notches R6
54304125	BR6K54 ceramic spiral R6		
2	Insert	EL54305202	100 110000r/min
		EL54305222	65 65000r/min
3	Resilient mouting	EL23542	PLC83-18-5
4	Twist fix	54307002	Un-smooth
		54307005	smooth
5		54308051	B75(black)
		54308061	L73(red)
6	Bushing	54307146	
7		EL54307103	
8	O ring	EL46470	Φ6×2
9	Cover	EL54302526	
10	Seal ring	EL54302509-BA	
11	Cover	EL54302527	
12	Lever	EL54301521	BD380 ~ BD416
13	Lever	54301521	BD320 BD330
14	Cover	EL55801508	BD416
15	Cover	54301182BB	BD330
16	Channel for BD320		
17	Channel for BD416		





No. in photo	Item	Original Part No.	Remark
1	Deliver roller complete	EL54549114-BA EL02635	Φ7×Φ19×18
2	Pulley	EL54242353(I) EL54242373(II)	Φ70 with 73-1-49 bearing Φ100 with 73-1-49 bearing
3	Closing ball	EL52551086	
4	Package plate	EL52548273	Φ33Φ40 Φ42 Φ50 Φ54 Φ59
5	Package plate holder		
6	Trash tube		
7	Bush		Φ15×Φ18×Φ20×8
8	Connecting tube		
9	Pulley		
10	Plastic cup	EL52548164	
11			
12			

RIETER SEMI-AUTOMATIC

ROTOR



High speed bearing and rotor cup with diamond coating can work at 100,000 rpm.

Type	Rotor complete	Rotor cup	JINQIAO Part No.	Speed*10 ³	Bearing	Application
E254/U-D	E49 31845	E49 31895		40-60	73-1-50	Rieter BT923, R923
C248/U-D	E49 31842	E49 31892	8221124	45-65	72-8A	
C250/U-D	E49 31844	E49 31894		40-65	73-1-50	
C254/U-D	E4931845		8221113	40-60	72-8A	
C248/S-D	E49 31843	E49 31893		45-65	73-1-50	
C344/U-D-K	E49 31846	E49 31891	8221125	50-70	72-8A	
C341/U-D	E49 31827	E49 31877	8221422	60-90	T013	
C338/U-D	E49 31826	E49 31876	8221429	65-90	T013	
C536/U-D	E49 31813	E49 31863	8221425	75-95	T013	
C533/U-D	E49 31806	E49 31862	8221418	80-105	T013	
C533/T-D	E49 31815	E49 31864	8221419	85-105	T013	
C533/Tr-D	10510573		8221428	80-110	T013	
C531/R-D	E49 31804	E49 31853		100-110	72-8-6	
C531/T-D	E49 31805	E49 31861		100-110	72-8-6	
B540/U-D			8221108		T011A	
C554/U-D			8221101		73-1-31A	

RIETER SEMI-AUTOMATIC

OPENING ROLLER

The carding wire with diamond coating, is embalmed and has wear resistance.
Working life is much longer than other carding wires.
This kind wire is widely used to spin kinds of yarn.

Type	Bearing	JINQIAO Part No.	Application
OK40G	76-3-7K	82052701	Rieter BT923, R923
OK74DN	76-3-7K	82052702	
OK61DN	76-3-7K	82052703	
OK40DN	76-3-7K	82052704	
OK40DN	76-3-16	82052802	
OK61DN	76-3-16	82052803	
OK61DN	76-3-16	82052804	
OK74DN	76-3-16	82052805	
OK40G	76-3-16	82052806	
OK61A	76-3-16	82052405	
OK61B	76-3-16	82052406	
OS21	76-3-16	82052408	





No. in photo	item	Part No.	Remark
1	Measuring pulley	UE3022911	With 76-3-1 bearing
2	Guiding pulley	UE3022921	With 76-3-1 bearing
3	Complete pulley(I)	U90310136	big
		U90310139	small
4	V.K2 L.H Plate D54	UE7255031	
5	V.R.H Plate D54	UE7255061	
6	V.K2 Plate holder(left)	UE3155010	
7	Plate holder(right)	UE3155020	
8	Deliver roller	UE3154111	
9	Insurable patent	UE7153321	
10	Guiding pulley(I)	UE4145651	With 73-1-28 bearing
11	Guiding pulley(II)	UE4145731	With 73-1-28 bearing
12	Pulley with bearing(I)	UE4145651	With 73-1-49 bearing
13	Pulley with bearing(II)	UE4145731	With 73-1-49 bearing
14	Yarn guide	10445633	
15	Pulley	10612520	With 73-1-28 bearing
16	Closing ball		
17			
18			
19	Solenoid valve	UE4931065	
20	Rubber spring		

Taitan/Rifa SEMI-AUTOMATIC

ROTOR

Less weight, high wear resistance, much more advantages compared with steel rotor cups.

- Much longer working life of the rotor bearing.
- Possibility of increasing the working speed of rotor.
- Less power consumption, less abrasion of the brake and belt.

Rotor type	Bearing	JINQIAO Part No.
36TA-DN	T010	822623
36TA-BD	T010	822626
T36-NI	T010	8226271001
T34-NI	T010	822627201
T34-BD	T010	82262721
T42-NI	72-6T	822629
T42-BD	72-6TT	822643001
V54-NI	73-1-31T	822646
T33-NI	72-6T	8223310
33TA-DN	72-6T	8223308
33TA-BD	72-6T	8223306
T33-NI	T010	8223317
G-G33-BD	T010	8223312
T36-NI	72-6G	8223302
T36-DN	T010	8223305
42TG-NI	72-6T	8223307
T42-BD	72-6T	8223311
T42-BD	72-6TT	822331101
42TGH-NI	72-6G	8223303
T42A-DN	72-6G	8223327
42L-BD	72-6G	8223328
U50-DN	73-1-31G	8223313
54LA-NI	73-1-31G	8223309
54L-DN	73-1-31G	822330901
54Z-DN	73-1-31T	8223314
54Z-DN	73-1-31G	82233141



Taitan/Rifa SEMI-AUTOMATIC

OPENING ROLLER

OPENING ROLLER HEAD >>

Type	JINQIAO Part No.	Application
TRC OS21	82410001	RF-RS30, Schlafhorst
TRC OK37	82410002	
TRC OK40	82410003	
OK61DN	82410004	



OPENING ROLLER COMPLETE >>



Type	JINQIAO Part No.	Application
Trutzschler OK37+bearing 1430110	8251001	RF-RS30,Schlafhorst
Trutzschler OK40+bearing 1430110	8251002	
Trutzschler OS21+bearing 1430110	8251003	
Trutzschler OK61+bearing 1430110	82510031	
OK61DN+ bearing 1430110	8251005	
OK40DN+ bearing 1430110	8251008	
OK40G+bearing 1430110	8251009	
OK40DN+bearing	82052401	
OK61DN+bearing	82052402	
OK40G+bearing	82052403	
OK61A+bearing	82052405	
OK61B+bearing	82052406	
Trutzschler OS21+bearing	82052408	



ROTOR BEARING

High speed rotor bearing, made from JINQIAO, has excellent material, and strictly made by high precision CNC machine. Ball design of bearing in double channel double row makes stable operation.

Multiple laminated seal-packing of bearing makes dust-proofing high efficiency.

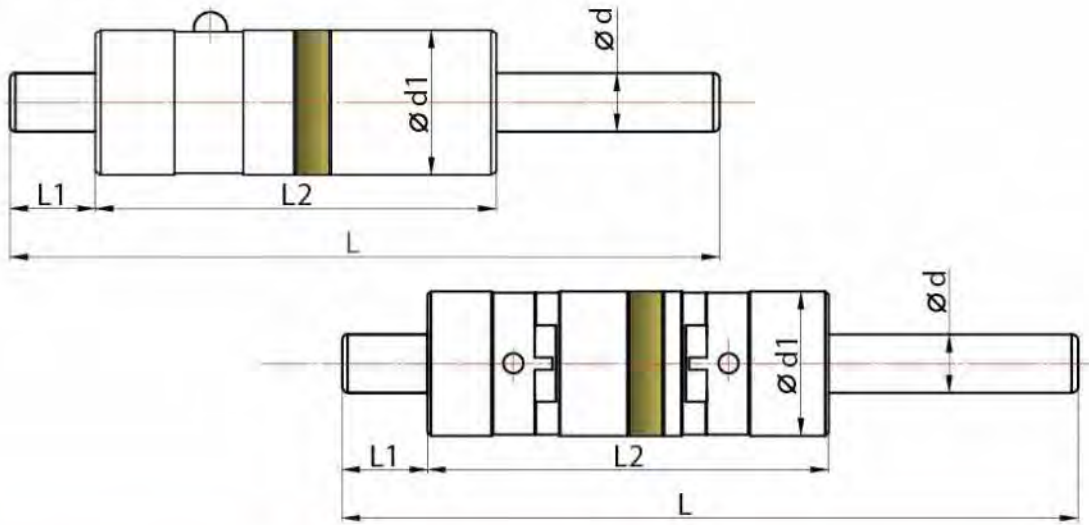
Bearing can be lubricated, and long service life, easy maintenance.

Sorting assembly, precision and smooth.

Working speed can reach to 105,000 rpm, damage rate in one year is less than 5%.



Bearing structure diagram >>



Type	$\varnothing d$ (mm)	$\varnothing d1$ (mm)	L (mm)	L1 (mm)	L2 (mm)	Max Speed (x1000r/min)	Suggested Speed (x1000r/min)
T013	8.9	22	108	13	61	120	≤ 105
73-1-69	10	22	108	13	61	80	≤ 72
T010	8.9	22	112	13	61	120	≤ 105
72-8-6	8.9	22	108	13	61	110	≤ 105
72-6T	8.9	22	112	13	61	90	≤ 81
72-6	8.9	22	112	13	61	90	≤ 81
73-1-31T	10	22	112	18	56	80	≤ 72
73-1-31	10	22	112	18	56	80	≤ 72
73-1-14	10	22	112	18	56	60	≤ 45

Type	Ball material	JINQIAO Part No.	Application
73-1-14		81901	BD200,F1603
73-1-22		81902	BD200,F1603
73-1-31G	Steel ball	81903	BD200,BD-D30,Rifa,Taitan
73-1-31G	Steel ball	81904	BD200,BD-D30,Rifa,Taitan
73-1-31T	Ceramic ball	81905	BD200,BD-D30,Rifa,Taitan
73-1-31T	Ceramic ball	819051	BD200,BD-D30,Rifa,Taitan
72-6G	Steel ball	81906	Rifa,Taitan
72-6T	Ceramic ball	81907	Rifa,Taitan
72-6TT		819081	Rifa,Taitan
72-8-6		819142	Rieter BT923,R923,R35
72-8-7		81912	Rieter BT923,R923,R35
T010		81908	Schlafhorst BD series
T011		81909	Rieter BT923,R923,R35
T013		819141	Rieter BT923,R923,R35

Denizak Tekstil San. Ve Tic. Ltd. Sti.

15 Temmuz Mah. Bahar Cad.

Nurol Park Ofis No : 43 / Z-1

GUNESLI BAGCILAR ISTANBUL 34212

Tel : +90 212 465 90 76

Mobile : +90 530 930 11 41

JSM.

JINQIAO SPINNING MACHINERY PARTS MANUFACTURING CO., LTD.

A: No.3639, Changchengnanda Street, Qingyuan District, Baoding City, Hebei Province, China

T: 0086-312-5807728

E: sale@jqfangji.cn

W: www.jqfangji.cn

F: 0086-312-5807728

Z: 071100